



# Toucan Education Programs of Belize

Generation  
Study Abroad™  
IEE | Opening Minds to the World®  
COMMITMENT PARTNER

## intern in BELIZE

### A TOUCAN EDUCATION PROGRAM

#### Terms Offered

- Spring
- Summer
- Fall

#### Program Length

4, 6, 8, Weeks  
1 Semester

#### Application Deadlines

Spring – October, 31  
Summer – December, 15  
Fall – April, 15

#### INTERNATIONAL INTERNSHIPS IN CENTRAL AMERICA

*The Intern in Belize program offers personalized internship placements in the following areas:*

- ✓ Education
- ✓ Conservation
- ✓ Community Development
- ✓ Health
- ✓ Social Services

An International Internship is an incredible opportunity to reinforce career choices and gain world of work experience. “Stand out from the crowd with interpersonal skills honed from living in a foreign country”.

Participate in an internship that makes a difference to grassroots organizations and communities while living in a multicultural society. For a life changing experience, consider the Intern in Belize program today.

serve, learn, explore,

Study Abroad in Belize with Toucan Education Programs Limited.

888-841-7224

 GET IN TOUCH!



facebook.com/TEP.StudyinBelize



info@studyinbelize.com



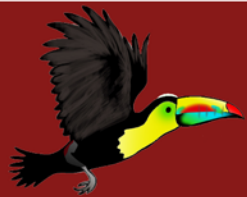
twitter.com/studyinbelize



www.studyinbelize.com







# Toucan Education Programs of Belize



## intern in BELIZE

### AN EXPERIENTIAL LEARNING EXPERIENCE

### PROGRAM FACTS



#### Country Facts

Population: 312,698  
Capital: Belmopan City  
Language: English / Spanish  
Size: 8,866 sq. miles  
GDP Per Capital: \$6,846.02  
Program Highlights

- Personalized placements mapped according to skills, interest, and learning goals.
- International living experience in a multicultural society
- Cultural learning activities such as lectures, and excursions
- Official Record of Service
- Structure and incomparable support
- Comprehensive fees and exceptional program value

The Intern in Belize is a comprehensive program established to provide undergraduate, graduate, and recent graduates with an experiential learning experience in areas that contribute to the growth and development of the young nation of Belize. The program promotes interpersonal growth and cross-cultural understanding through a series of built in cultural and learning activities such as site visits and lectures from professionals in the various fields. The Intern in Belize program is more than a resume building experience. The program aims to further develop participants' academic, community, and professional development through customized placements based on skills and learning outcomes defined by participants.

#### The Application and Enrollment Guidelines

Participation is limited to those who have second semester sophomore status with a GPA of 2.7. on a 4.0 scale.

Application documentation includes application and resume forms.

All program related application and enrollment forms are online.

Admission response time-line is approximately 10 working days.

#### Program Fees

Application fee:	\$ 75.00
4 weeks:	\$ 3,727.00
6 weeks:	\$ 4,728.00
8 weeks:	\$ 5,924.00

Application fee is non-refundable.

Early deadline scholarships ranges from \$375 - \$600. Conditions apply.

Faculty-led Alumni scholarships ranges from \$560 - \$890. Conditions apply. (All fees are in U.S. Dollars)

#### Program Fees Includes

- Professional placement
- Comprehensive travel insurance (\$250,000.00)
- Pre-departure and incountry orientation
- Housing
- Meals (Breakfast, dinner, weekdays only)
- Round-trip airport transfers
- GSM local cell phone
- 24/7 emergency and crisis management support
- Two organized excursions

888-841-7224



GET IN TOUCH!



facebook.com/TEP.StudyinBelize



twitter.com/studyinbelize



info@studyinbelize.com



www.studyinbelize.com

